

## APPENDIX 1: European Art Deaccession Considerations

COLLECTIONS COMMITTEE | JUNE 14, 2021

The following sixty-one works are recommended for deaccession because they do not meet basic standards of museum quality. They were accessioned between 1921 and 1991, when virtually all gift proposals were accepted by the Museum without proper vetting. None of these works has been on display since such records were maintained.

The quality and condition of each work was assessed in the vault with Heather Bouchey, Registrar, on August 28, 2015, by:

Dr. Chiyo Ishikawa, Deputy Director and Curator of European Art, Seattle Art Museum

Dr. Lynn Orr, Curator Emerita of European Art, Fine Arts Museums of San Francisco

Dr. Dawson Carr, The Janet and Richard Geary Curator of European Art, Portland Art Museum

Each of the works listed below was unanimously agreed to be unworthy of display by an art museum. The list is divided into two parts: (A) European Paintings on canvas or panel [19 works], and (B) Miniature Paintings [42 works]. Within each part, the works are listed in the order of their accession by the Museum.

### A. European Paintings

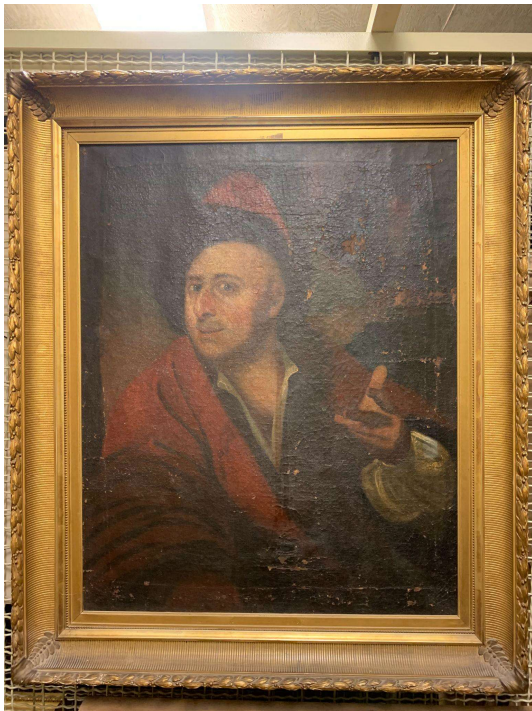


Unknown Italian artist  
*Crucifixion*, 15<sup>th</sup> century

Tempera on wood

Gift of Mrs. Lucy Dodd Ramberg, 21.90

Poor quality and condition; restoration would cost more than the painting is worth.



Jan Kupecký  
 Bohemian, 1667-1740  
*Portrait of a Man*, n.d.  
 Oil on canvas, 30 ¼ x 24 ¼ inches  
 Gift of Mary E. Teal in the name of her daughter, Clara Teal, 24.1  
 Poor quality and condition.



Benjamin Marshall  
 British, 1767-1835  
*Fox Hunters*, n.d.  
 Oil on canvas  
 Bequest of Winslow B. Ayer, 35.15  
 Not museum quality. Museum founder Winslow B. Ayer donated fifty works of art, including some of the finest examples of Impressionist painting: Eugène Louis Boudin's *Le Havre* (35.2), Camille Pissarro's *The Red House* (35.22), and Pierre Auguste Renoir's *The Seine at Argenteuil* (35.26) and *Young Girls Reading* (35.25). The

painting under consideration only tarnishes Ayer's distinguished legacy in the Museum's collection.



Georges Michel  
French, 1763-1843

*Landscape*, n.d.

Oil on canvas, 25 5/8 x 32 1/8 inches

Gift of Henry L., Elliot R., and Hamilton F. Corbett in memory of their mother, Helen Ladd Corbett, 36.94

Not museum quality. The heirs of Mrs. Corbett gave some noteworthy works of art in her memory, including one of the best examples of ancient Greek vase painting (36.137), several significant examples of ancient glass (36.35, 36.111, 36.113, 36.120, 36.125-127, 36.134-135, and Julian Alden Weir's *Flower Piece*, 1882 (36.130), one of the best still-life paintings in the collection. Georges Michel's painting is not of the same level of quality and only diminishes the Ladd/Corbett legacy in the Museum. This painting will never be shown because the Museum has an exceptional Michel landscape (38.12), given by Mrs. Lillian B. Ladd, which is often on display.



Unknown Dutch artist

*Head of a Young Girl*, 19<sup>th</sup> century

Oil on wood, 26 5/8 x 21 1/8 inches

Gift of Col. C.E.S. Wood in memory of his wife, Nanny Moale Wood, 43.2.2

Not museum quality; painted in the 19<sup>th</sup> century in the style of the 17<sup>th</sup> century.

Dr. Walter Liedtke, the late Curator of Dutch and Flemish Painting, Metropolitan Museum of Art, recommended deaccession on November 5, 2001. Even though the donor was a founder of the Portland Art Museum, this painting diminishes his legacy in our collection. He gave seventeen works of art of much greater quality and importance, including Gustave Courbet's *Violoncellist*, 1847 (43.2.1).



Unknown Dutch painter

*Landscape*, 18<sup>th</sup>-19<sup>th</sup> century

Oil on canvas, 52 ½ x 63 ½ inches

Gift of Miss Caroline Burke, 57.9

The painting is a pastiche of 17<sup>th</sup>-century Dutch and Italianate sources. It shows no trace of the style or technique of Paulus Potter, to whom the work was attributed at the time of donation. Dr. Walter Liedtke, the late Curator of Dutch and Flemish Paintings, Metropolitan Museum of Art, examined the painting on November 5, 2001, and recommended deaccession, noting: "the only reference to Potter is that it depicts cows."



Unknown British artist

*Portrait of a Lady*, 1740s-1750s

Oil on canvas, 30 1/8 x 25 1/8 inches

Bequest of Francis Stockwell Adams, 58.9

Not museum quality.



Circle of Gerrit van Honthorst

Dutch, 1590-1656

*The Liberation of Saint Peter*, 1620s

Oil on canvas, 37 ½ x 51 7/8 inches

Gift of Mrs. Caroline Burke Swann, 59.30

This is a poor copy of a 1616 painting by Honthorst in the Gemäldegalerie, Berlin. The copy might have been created in the seventeenth century, but the quality does not meet museum standards. Works from an artist's circle are sometime worthy of being exhibited, as is the case with Circle of Guercino, *Reuben Showing the Bloody Coat of Joseph to Jacob* (57.17), which was made in Guercino's close orbit and is almost always on view in our galleries. The painting under consideration does not convey the impressive quality of Honthorst's original.



Alfred Sisley

French and British, 1839-1899

*Untitled*, 1874

Oil on board, 10 x 7 7/8 inches

Gift of Mr. and Mrs. Daniel Zell, 73.26

The painting might be autograph, but it is not worthy of an art museum. The quality of Sisley's paintings vacillated considerably and this one, if autograph, ranks among his least successful works. The Museum has a much better example: Alfred Sisley, *Valley*



*of the Seine*, 1885, oil on canvas, Gift of Laura and Roger Meier on the occasion of the 110th Anniversary of the Museum, 2002.34.



Follower of Jacques (le Bourguignon) Courtois

French, active Italy, 1621-1676

*Turkish Engagement*, 1640-1657

Oil on wood, 16  $\frac{3}{4}$  x 24  $\frac{1}{4}$  inches

Gift of Mr. and Mrs. Charles Catlow, 73.37

The quality and condition of this painting do not meet museum standards.



Adolphe Joseph Thomas Monticelli

French, 1824-1886

*Fête Before the Colonnade*, 1845-1886

Oil on panel, 16  $\frac{7}{8}$  x 21  $\frac{1}{4}$  inches

Gift of Mrs. John W.S. Platt and Lady McDonald, 76.26

The painting is in poor condition and does not represent the artist well. The Museum has four much better examples of Monticelli's art: *Figures in a Forest*, 1850-1886, oil on canvas, Gift of Charles E. Ladd in memory of his mother, Mrs. William S. Ladd, 13.15; *Summer Day*, 1867, oil on wood panel, Bequest of Winslow B. Ayer, 35.18; *The*

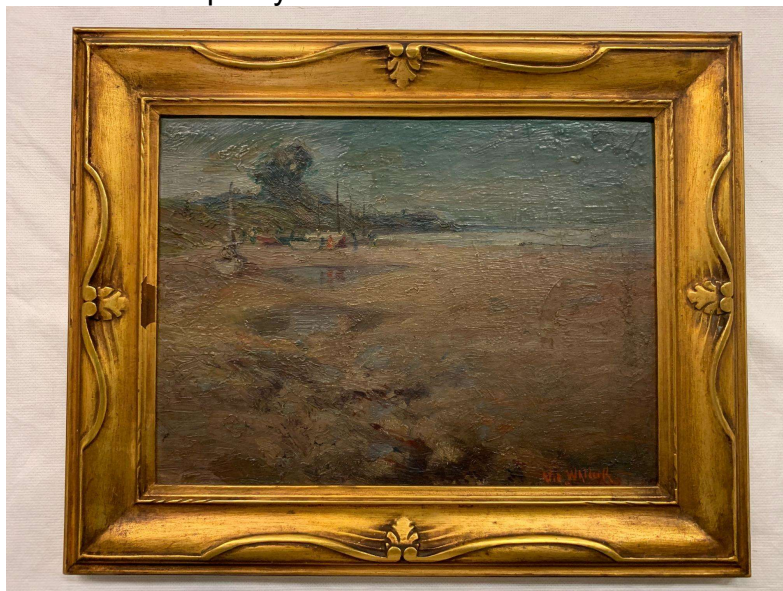
*Marriage of Marquis d'Amboise*, 1845-1886, oil on panel, Bequest of Charles Francis Adams, 43.8.34; *A Fête at Herculanum*, mid-19th century, oil on panel, Bequest of Miss Mary Forbush Failing, 48.1.5.



Heinrich Mansfeld  
Austrian, 1816-1901  
*Tale of Battle*, 1850-70  
Oil on canvas, 17 x 13 7/8 inches  
Gift of Mr. and Mrs. Charles E. Shrewsbury, 77.48.4  
Not museum quality!



Isidor Kaufmann  
 Hungarian, 1853-1921  
*Self-Portrait*, 1880  
 Oil on board, 8 5/8 x 5 1/4 inches  
 Gift of Mr. and Mrs. Charles E. Shrewsbury, 77.48.5  
 Not museum quality.



N. Waldeck  
 Austrian, active 20<sup>th</sup> century  
*Beached Boats and Tidepools*, 1895-1922  
 Oil on composition board, 8 5/8 x 11 5/8 inches  
 Gift of Mr. and Mrs. Charles E. Shrewsbury, 82.84.6  
 Not museum quality.





Albertus Verhoesen

Dutch, 1806-1881

*A Chicken Family*, 1877

Oil on panel, 5  $\frac{3}{4}$  x 7  $\frac{3}{8}$  inches

Gift of Mrs. Herbert H. Minthorn, 91.79

Not museum quality.

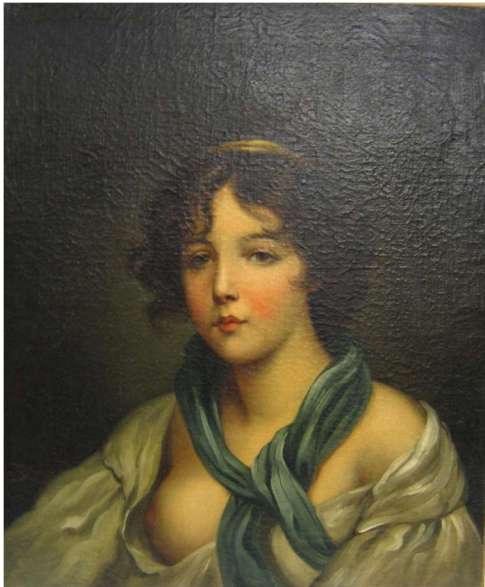


Unknown Dutch artist

*Three Figures at Window*, 19<sup>th</sup> or early 20<sup>th</sup> century  
Oil on canvas, 9  $\frac{3}{4}$  x 8  $\frac{3}{16}$  inches  
Gift of Mr. Charles Shrewsbury, ST106(84)1  
Not museum quality.



Villiers Queensby  
Nationality and life dates unknown  
*Sailor at Window*, 19<sup>th</sup> century  
Oil on canvas, 7 x 4 inches  
Gift of Mr. Charles Shrewsbury, ST106(84)4  
Not museum quality.



Follower of Jean-Baptiste Greuze  
French, 1725-1805  
*A Young Woman*, n.d.  
Oil on canvas, 23  $\frac{9}{16}$  x 19  $\frac{5}{8}$  inches

Gift of Jean Vollum, ST155(86)

Not museum quality. Greuze's bust-length images of pretty young women inspired many others to emulate his manner, but this is not a distinguished example.



Follower of Pierre Patel

French, 1605-1676

*Classical Landscape*, 17<sup>th</sup> or early 18<sup>th</sup> century

Oil on panel, 13 x 15 7/16 inches

Bequest of Dr. Edwin Binney, ST94.7.2

Not museum quality. The painting was bequeathed to the Museum fully attributed to Claude Lorrain (1600-1682), which was very wishful thinking. It is closer to the work of Pierre Patel, who was influenced by Claude and produced scenes with classical architecture, but this work does not have Patel's refinement of technique. Dr. Binney was one of the most significant donors of art to the Museum. The 23 paintings he donated or bequeathed include many of the best examples of French art in the collection: Sébastien Bourdon's *John the Baptist Preaching on the Sea of Tiberias* (83.87), Philippe de Champaigne's *Adoration of the Shepherds* (66.83), Charles-François Lacroix's *A Shipwreck* (94.30), Nicolas de Largillière's *Prince Christian of Bavaria* (79.43), François Lemoyne's *Latona and the Peasants of Lycia* (94.30.3), two fine portraits by Gabriel Revel (68.34 and 94.30.4), and Jean François de Troy's *Allegory of Music* (68.29). The painting under consideration is of much lesser quality and importance.

## B. Miniatures

The miniature portraits listed below derive from two donors: Mrs. George H. (Gertrude) Russell in 1924, and Grace Lang in 1974. There are 42 works, which do not meet basic standards of museum quality. In most cases, it has not been possible to determine the medium and support because the paintings are sealed behind glass in their frames. The miniatures were painted either in watercolor or in oil, most often on a thin piece of ivory. Works of art incorporating ivory cannot be sold at present in the United States. We seek your permission to deaccession these miniatures by sale if that becomes possible, or by other means. A smaller institution, such as an historical society, might want them as a gift.

### Gift of Mrs. George H. Russell, 1924



Unknown European artist

*Fat Lady with Black Dress and Nosegay*, before 1924

Miniature, 5 1/4 in x 4 11/16 in x 5/8 in

Gift of Mrs. George H. Russell, 24.10.14



Unknown European artist

*Man with Black Stock and Muttonchop Whiskers*, before 1924

Miniature, 4 7/8 in x 4 1/4 in x 1/2 in

Gift of Mrs. George H. Russell, 24.10.16





Unknown European artist  
*Man with White Stock, Blue Coat, and Black Hair*, before 1924  
 Miniature, 4 15/16 in x 4 7/8 in x 5/8 in  
 Gift of Mrs. George H. Russell, 24.10.18



Unknown European artist  
*Small Blonde Child in Profile*, 20th century  
 Miniature with human hair in metal frame with pin, 5 5/16 in x 2 in x 1/2 in  
 Gift of Mrs. George H. Russell, 24.10.20



Unknown European artist  
*Carolina di Napoli*, before 1924

Miniature, 4 1/4 in x 4 1/4 in x 1/4 in  
Gift of Mrs. George H. Russell, 24.10.34



Unknown European artist  
*Vittorio Demonte*, before 1924  
Miniature, 4 in x 3 1/4 in x 5/8 in  
Gift of Mrs. George H. Russell, 24.10.40



Unknown European artist  
*Luigi Demonte*, before 1924  
Miniature, 3 5/8 in x 3 1/4 in x 5/8 in  
Gift of Mrs. George H. Russell, 24.10.41



Unknown European artist  
*Young Girl in Bright Blue Velvet Gown*, 1839  
 Miniature, 3 1/4 in x 2 3/8 in x 1/8 in  
 Gift of Mrs. George H. Russell, 24.10.43



Unknown European artist  
*Giacomo Demonte*, 19<sup>th</sup> century  
 Miniature, 5 1/8 in x 4 3/8 in x 1/2 in  
 Gift of Mrs. George H. Russell, 24.10.48



Unknown European artist  
*Woman in Blue Bodice*, before 1924  
 Miniature, 3 1/4 in x 2 3/8 in x 1/8 in  
 Gift of Mrs. George H. Russell, 24.10.61



Unknown European artist  
*Little Girl with White Bonnet and Flowers*, before 1924  
 Miniature, 4 1/4 in x 3 13/16 in x 1/2 in  
 Gift of Mrs. George H. Russell, 24.10.69





Unknown European artist  
*Woman in White*, before 1924  
 Miniature, 3 9/16 in x 2 3/4 in x 3/16 in  
 Gift of Mrs. George H. Russell, 24.10.78



Unknown European artist  
*Profile of Man with Black Coat and White Stock*, before 1924  
 Miniature with human hair, 2 1/4 in x 1 3/4 in x 3/8 in  
 Gift of Mrs. George H. Russell, 24.10.86

Bequest of Grace Lang, 1974



Unknown European artist  
*Napoleon and Josephine*, 19<sup>th</sup> century  
 Miniature, 7 1/8 in x 8 in x 1/2 in  
 Bequest of Grace Lang, 74.6.1



Unknown European artist  
*Portrait of a Lady with Dog*, before 1974  
 Miniature, 4 1/8 in x 3 5/16 in  
 Bequest of Grace Lang, 74.6.2



Unknown European artist  
*Portrait of a Lady*, before 1974  
 Miniature, 5 3/8 in x 3 7/8 in  
 Bequest of Grace Lang, 74.6.4



Unknown European artist  
*Portrait of a Lady*, before 1974  
 Miniature, 5 1/8 in x 4 1/8 in  
 Bequest of Grace Lang, 74.6.5



Unknown British artist  
*Portrait of a Lady*, 19<sup>th</sup> century  
 Miniature in ivory frame, 3 13/16 in x 3 3/8 in  
 Bequest of Grace Lang, 74.6.6



Unknown European artist  
*Portrait of a Lady*, before 1974  
 Miniature in ivory frame, 3/8 in x 3 7/8 in x 3 5/8 in  
 Bequest of Grace Lang, 74.6.7



Unknown European artist  
*Portrait of a Man*, before 1974  
 Miniature in ivory frame, 3 7/8 in x 3 1/4 in  
 Bequest of Grace Lang, 74.6.8



Unknown European artist  
*Portrait of a Lady*, before 1974  
 Miniature, 4 1/4 in x 3 3/4 in  
 Bequest of Grace Lang, 74.6.9



Unknown European artist  
*Portrait of a Lady*, 19<sup>th</sup> century  
 Miniature in ivory frame, 5 3/8 in x 4 11/16 in x 1/2 in  
 Bequest of Grace Lang, 74.6.10





Unknown European artist  
*Portrait of a Lady*, before 1974  
 Miniature in ivory frame, 5 3/8 in x 4 5/8 in x 3/8 in  
 Bequest of Grace Lang, 74.6.11



Unknown American artist  
*Locket with Profile Portrait of a Woman*, before 1974  
 Miniature, with lock of hair behind, 3 3/8 in x 2 1/4 in x 1/4 in  
 Bequest of Grace Lang, 74.6.14



Unknown European artist  
*Portrait of a Lady*, before 1974

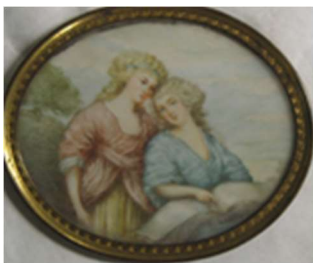
Miniature, 5/8 in x 4 1/2 in x 4 1/8 in  
Bequest of Grace Lang, 74.6.15



Unknown European artist  
*Woman with Plumed Hat*, before 1974  
Miniature, 3/8 in x 3 3/8 in x 2 5/8 in  
Bequest of Grace Lang, 74.6.16



Unknown European artist  
*Portrait of a Lady*, before 1974  
Miniature  
Bequest of Grace Lang, 74.6.17



Unknown European artist  
*Portrait of Two Women*, before 1974  
Miniature, 3/16 in x 2 5/8 in x 3 1/4 in  
Bequest of Grace Lang, 74.6.18



Unknown European artist  
*Portrait of a Lady*, before 1974  
 Miniature, 5 9/16 in x 3 3/8 in  
 Bequest of Grace Lang, 74.6.19



Unknown European artist  
*Portrait of a Woman in a White Lace Head Scarf*, before 1974  
 Miniature in ivory frame, 8 3/8 in x 5 15/16 in  
 Bequest of Grace Lang, 74.6.20



Unknown European artist  
*Portrait of a Lady as Diana*, before 1974  
 Miniature, 5 3/8 in x 4 11/16 in x 1/2 in

Bequest of Grace Lang, 74.6.21



Unknown European artist

*Mona Lisa*, before 1974

Miniature in ivory frame, 5 3/8 in x 4 11/16 in x 3/8 in

Bequest of Grace Lang, 74.6.22



Unknown European artist

*Young Girl*, late 19<sup>th</sup> century

Enamel miniature, 3/4 in x 5 1/4 in x 3 3/4 in

Bequest of Grace Lang, 74.6.23



Unknown European artist

*Portrait of the Duchesse de Choiseul*, late 19<sup>th</sup> century

Miniature in frame inlaid with tortoise shell and mother of pearl, 1/4 in x 4 3/8 in x 3 in

Bequest of Grace Lang, 74.6.24





Unknown European artist  
*Portrait of a Lady*, before 1974  
 Miniature, 1/2 in x 3 3/8 in x 2 3/8 in  
 Bequest of Grace Lang, 74.6.25



Unknown European artist  
*Portrait of a Lady*, before 1974  
 Miniature, 1/2 in x 3 3/4 in x 2 13/16 in  
 Bequest of Grace Lang, 74.6.26



Unknown European artist  
*Portrait of the Duchess of Devonshire*, after 1774

Miniature in brass frame inlaid with tortoise shell and mother of pearl, 5 3/4 in x 4 5/8 in  
x 3/8 in  
Bequest of Grace Lang, 74.6.27



Unknown European artist  
*Portrait of Countess Spencer*, before 1974

Miniature in brass frame inlaid with tortoise shell and mother of pearl, 5 1/2 in x 4 3/4 in  
x 3/8 in  
Bequest of Grace Lang, 74.6.28



Unknown European artist  
*Portrait of a Woman*, before 1974  
Miniature, 3 1/4 in x 2 3/8 in  
Unknown donor, 74.6.29



Unknown European artist  
*Portrait of a Man (Napoleon?)*, 1920s  
 Miniature, 3/4 in x 6 15/16 in x 5 3/16 in  
 Bequest of Grace Lang, 74.6.30



Unknown European artist  
*Portrait of a Woman (Josephine?)*, 1920s  
 Miniature, 15/16 in x 6 3/4 in x 5 1/4 in  
 Bequest of Grace Lang, 74.6.31



Unknown European artist  
*Portraits of Seven Beauties*, before 1974  
 Miniatures, 3/4 in x 12 in x 8 in

Bequest of Grace Lang, 74.6.32