

# NOW ON VIEW

Recent Acquisitions of Prints and Drawings Spanning 500 Years



AUGUST 8 – DECEMBER 13, 2015

PORTLAND ART MUSEUM, OREGON

# NOW ON VIEW

## Recent Acquisitions of Prints and Drawings Spanning 500 Years

The graphic arts have always been vital to the Portland Art Museum's mission of engaging the public with art of enduring quality. Presently comprising nearly twenty-five thousand sheets, the collection of prints and drawings represents more than half of the Museum's total holdings. *Now on View* celebrates the graphic arts by highlighting work that has entered the collection since 2009 (the year the Museum last devoted an exhibition to recent acquisitions of works on paper), thanks in large part to the support of people who share a vision for the arts in Portland.

The prints and drawings collection is among the most diverse at the Museum. Ranging in date from 1497 to 2013, the works in this exhibition reflect that diversity. The variety of media is similarly broad and includes woodcuts, engravings, etchings, mezzotints, lithographs, screenprints, and drawings. The majority of the recent acquisitions have arrived as gifts from artists, collectors, and friends of the Museum and speak to the collecting habits and tastes of our community. The Museum's curatorial team consciously directs the growth of the holdings, making selective purchases that serve to strengthen and refine the collection, adding to the depth and breadth of the graphic arts in Portland.

More than eleven hundred sheets have entered the collection since 2009; the more than fifty objects featured here to represent this impressive body of work have never been on view at the Museum—everything in this exhibition is making its debut on the gallery walls. This selection breaks down into a few distinct groupings: old master prints; nineteenth-century French and Belgian prints, with stunning examples from the



15 Albrecht Dürer

invention of lithography, the etching revival, and the so-called color revolution of the 1890s; and contemporary art, including provocative investigations of the human body.

Acquiring this quantity of quality works takes a community of generous supporters and committed professionals. The Museum's graphic arts department has developed many fruitful partnerships, such as with the Sitka Center for Art and Ecology and with the print workshop Mahaffey Fine Art, resulting in wonderful gifts. It has explored innovative means of fundraising. For example, the Museum's first "New for the Wall" evening held in April 2013, at which the audience voted on an acquisition from the seven works the curators presented, resulted in Albrecht Dürer's *The Virgin and Child Crowned by Two Angels* of 1518 entering the collection. Many

of the works in the exhibition were acquired at the Portland Fine Print Fair, a weekend fundraiser the Museum inaugurated in 2014, which welcomes print dealers from across North America, Europe, and Asia. The proceeds from that event made it possible for the Museum to purchase works for its collection including *japoniste* prints by Henri Gustave Jossot and Charles-Louis Houdard; in addition, several donors purchased prints that immediately became gifts to the collection, such as the stunning vista of Rome by Giovanni Battista Falda, and an intimate view of a woman bathing by Suzanne Valadon. Also in 2014, the Museum won the prestigious Champion & Partners Acquisition Prize in Honour of Richard Hamilton, a cash award that funded the purchase of James Ensor's *La Cathédrale* of 1886. These efforts were bolstered





10 Antonio Canaletto

by longstanding friendships the Museum has enjoyed with local and national collectors, galleries, artists, and institutions, not least among them the devoted Museum Councils who raise money for art purchases. It is inspiring to note that many

gifts, as reflected in the credit lines, are made to honor members of our community.

*Now on View* not only offers a glimpse into the Museum's latest acquisitions of prints and drawings, but also salutes the collectors, artists, and donors who have made these rich and varied gifts and purchases possible. Museum visitors can look forward to engaging with five centuries of prints and drawings well beyond the length of this exhibition as works are rotated into the galleries, and to a collection that continues to evolve, in step with this thriving medium.



6 Albert Besnard

*Organized by the Portland Art Museum and curated by Mary Weaver Chapin, Ph.D., curator of prints and drawings, this exhibition is supported in part by the Vivian and Gordon Gilkey Endowment for Graphic Arts and the Exhibition Series Sponsors.*



## CHECKLIST

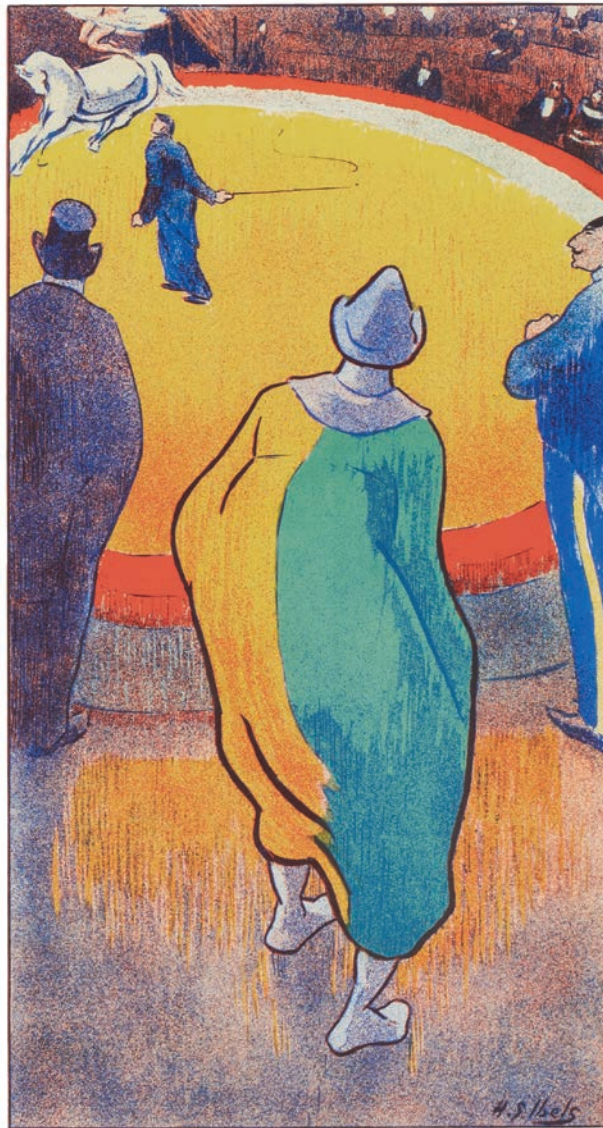
Dimensions are given in inches; height precedes width. Sheet sizes are given for drawings; plate or image sizes and sheet sizes are given for prints.

1. **Magdalena Abakanowicz**  
(Polish, born 1930)  
*Head*, 1989  
Charcoal on paper  
16  $\frac{1}{2}$  x 11  $\frac{11}{16}$   
Gift of Judith Bettelheim in honor of Mildred Constantine  
2012.146.1
2. **Hans Sebald Beham**  
(German, 1500–1550)  
*Head of Christ*, 1520  
Engraving  
sheet (trimmed to plate mark):  
2  $\frac{1}{8}$  x 1  $\frac{9}{16}$   
Gift of Prudence Miller  
2013.122.1
3. **Hans Sebald Beham**  
(German, 1500–1550)  
*Death and the Three Nude Women*,  
1520/1550  
Engraving  
sheet (trimmed to plate mark): 3 x 2  $\frac{1}{8}$   
Gift of Prudence Miller  
2013.122.15
4. **Hans Bellmer**  
(German, born Poland, 1902–1975)  
*Juliette* ou *Les prospérités du vice*  
(*Juliette* or *The Rewards of Vice*),  
from the series *Petit Traité de Morale*  
(*A Little Moral Discourse*), 1968  
Color etching and engraving  
plate: 10  $\frac{7}{8}$  x 8  $\frac{3}{8}$   
sheet: 14  $\frac{7}{8}$  x 11  $\frac{3}{16}$   
Gift of Sue Taylor in memory of  
Don Baum  
2009.16



3 Hans Sebald Beham

5. **Thomas Hart Benton**  
(American, 1889–1975)  
*White Calf*, 1945  
Lithograph  
image: 9  $\frac{7}{8}$  x 12  $\frac{3}{4}$   
sheet: 12 x 15  $\frac{15}{16}$   
The Carol and Seymour Haber Collection  
2008.68.3
6. **Albert Besnard**  
(French, 1849–1934)  
*Morphinomanes* ou *Le Plumet*  
(*Morphine Addicts* or *The Feather*), 1887  
Etching  
plate: 9  $\frac{9}{16}$  x 14  $\frac{9}{16}$   
sheet: 12  $\frac{9}{16}$  x 17  
Museum Purchase: Jean Y. Roth  
Memorial Fund  
2014.40.1
7. **Rodolphe Bresdin**  
(French, 1822–1885)  
*Le Marché aux parasols*  
(*Market with Umbrellas*), 1866  
Etching, printed chine collé  
plate: 6  $\frac{11}{16}$  x 3  $\frac{11}{16}$   
sheet: 12  $\frac{3}{8}$  x 8  $\frac{13}{16}$   
Gift of James D. Burke in honor of  
Paul L. McCormick  
2015.75.1
8. **William Brice**  
(American, 1921–2008)  
*Untitled*, 1973  
Charcoal on paper  
23  $\frac{15}{16}$  x 17  $\frac{15}{16}$   
Gift of the Brice Charitable Foundation  
2012.70.3
9. **Jules de Bruycker**  
(Belgian, 1870–1945)  
*Les Toits de St. Nicholas* (*Antwerp*)  
[*The Rooftops of St. Nicholas*  
(*Antwerp*)], 1932  
Etching  
plate: 8  $\frac{3}{4}$  x 7  
sheet: 15  $\frac{1}{2}$  x 11  $\frac{1}{16}$   
Museum Purchase: Portland Fine Print  
Fair Fund  
2014.114.1
10. **Antonio Canaletto**  
(Italian, 1697–1768)  
*Ale Porte del Dolo* (*At the Dolo Locks*),  
1735/1742  
Etching  
sheet (trimmed to plate mark):  
11  $\frac{3}{4}$  x 17  $\frac{1}{8}$   
Museum Purchase: Wright Family Fund  
2009.84
11. **Antonio Canaletto**  
(Italian, 1697–1768)  
*Landscape with a Pilgrim at Prayer*,  
1735/1744  
Etching  
plate: 5  $\frac{1}{2}$  x 8  $\frac{3}{4}$   
sheet: 5  $\frac{3}{4}$  x 8  $\frac{3}{8}$   
Gift of the Ruth Cole Kainen Estate  
2012.131.1



30 Henri-Gabriel Ibels

12. **Willie Cole**  
(American, born 1955)  
*Pressed Iron Bud*, 2005  
Color lithograph  
image: 29  $\frac{3}{4}$  x 22  $\frac{1}{8}$   
sheet: 30 x 22  $\frac{1}{8}$   
Museum Purchase: Funds provided by  
Daniel Bergsvik and Donald Hastler in  
honor of John Goodwin  
2015.73.1
13. **Albrecht Dürer**  
(German, 1471–1528)  
*Crucifixion*, from *The Large Passion*,  
ca. 1497–1498  
Woodcut  
image: 15  $\frac{7}{16}$  x 11  
sheet: 15  $\frac{13}{16}$  x 11  $\frac{3}{8}$   
Museum Purchase: Funds provided  
by an anonymous donor  
2013.56.1
14. **Albrecht Dürer**  
(German, 1471–1528)  
*The Annunciation*, from *The Small  
Woodcut Passion*, 1511  
Woodcut  
image: 5 x 3  $\frac{13}{16}$   
sheet: 5  $\frac{5}{16}$  x 4  $\frac{1}{8}$   
Gift of James and Diane Burke in  
honor of Mary Weaver Chapin  
2013.45.1



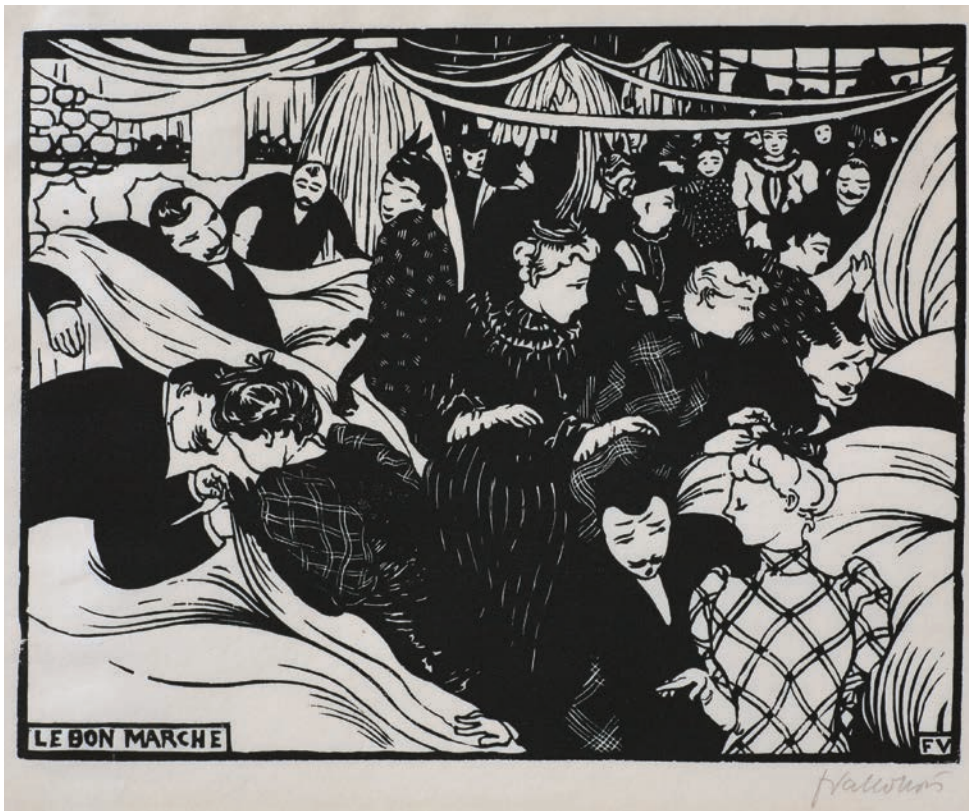
15. **Albrecht Dürer**  
(German, 1471–1528)  
*The Virgin and Child Crowned by Two Angels*, 1518  
Engraving  
plate:  $5 \frac{13}{16} \times 3 \frac{13}{16}$   
sheet:  $5 \frac{7}{8} \times 4 \frac{1}{16}$   
Museum Purchase: Funds provided by patrons of the 2013 "New for the Wall" evening  
2013.22.1
16. **James Ensor**  
(Belgian, 1860–1949)  
*La Cathédrale* (The Cathedral), 1886  
Etching  
plate:  $9 \frac{5}{16} \times 7$   
sheet:  $15 \frac{9}{16} \times 10 \frac{13}{16}$   
Museum Purchase: The Champion & Partners Acquisition Prize in Honour of Richard Hamilton, 2014  
2014.152.1
17. **James Ensor**  
(Belgian, 1860–1949)  
*Le Pont du Bois* (The Bridge in the Wood), 1889  
Etching  
plate:  $3 \frac{7}{8} \times 5 \frac{7}{16}$   
sheet:  $6 \frac{1}{4} \times 9$   
Gift of Tom and Lore Firman  
2013.21.1
18. **Giovanni Battista Falda**  
(Italian, 1643–1678)  
*Veduta del Castello, e Ponte Sant'Angelo, abbellito, con le statue degli angeli da Papa Celmente IX* (View of the Castle, and Ponte Sant'Angelo, Adorned with Statues of Angels, Commissioned by Pope Clement IX), 1671  
Engraving  
plate:  $18 \frac{3}{16} \times 27 \frac{1}{16}$   
sheet:  $20 \frac{1}{2} \times 29 \frac{3}{4}$   
Gift of Bruce Guenther in honor of Eduardo Arturo Vides  
2014.110.1
19. **Sam Francis**  
(American, 1923–1994)  
*Untitled*, 1976  
Lithograph  
image and sheet:  $27 \frac{1}{2} \times 41 \frac{9}{16}$   
Gift of the Sam Francis Foundation  
2010.8.5
20. **Théodore Géricault**  
(French, 1791–1824)  
*Cheval cauchois* (Horse from the Caux Region, Normandy); plate 4 from *Études de chevaux lithographiés* (Lithographic Studies of Horses), 1822  
Lithograph, printed chine collé  
image:  $6 \frac{3}{4} \times 8 \frac{3}{4}$   
sheet:  $15 \frac{3}{4} \times 21 \frac{7}{16}$   
Gift of James and Diane Burke in honor of Elizabeth Chambers  
2015.74.9



16 James Ensor

21. **Théodore Géricault**  
(French, 1791–1824)  
*Lara blessé* (Lara Wounded), 1822  
Lithograph  
image:  $7 \frac{1}{16} \times 9 \frac{1}{8}$   
sheet:  $12 \times 17 \frac{11}{16}$   
Gift of James and Diane Burke in honor of Bruno Amatter  
2013.45.2
22. **Hendrik Goltzius**  
(Dutch, 1558–1617)  
*Henry IV*, ca. 1600  
Engraving  
sheet (trimmed to plate mark):  $13 \frac{9}{16} \times 9 \frac{3}{4}$   
Gift of Prudence Miller  
2013.122.5
23. **Hendrick Goudt**  
(Dutch, 1583–1648)  
*Tobias and the Angel*, 1613  
Etching and engraving  
plate:  $7 \frac{13}{16} \times 10 \frac{1}{16}$   
sheet:  $10 \frac{1}{16} \times 10 \frac{5}{8}$   
Gift of James D. Burke in memory of Seymour Slive  
2014.157.3





53 Félix Vallotton

1. **Vincent Hamel**  
(Dutch, born 1931)  
*Prussian Blue*, 2004  
Wax crayon on paper  
11 <sup>7</sup>/<sub>8</sub> x 8 <sup>1</sup>/<sub>2</sub>  
Gift of Sally and Wynn Kramarsky  
2009.13.7
2. **René Georges Hermann-Paul**  
(French, 1864–1940)  
*Escargots d'Omnibus* (Omnibus Snails),  
1893  
Lithograph  
image: 10 <sup>5</sup>/<sub>8</sub> x 8 <sup>3</sup>/<sub>4</sub>  
sheet: 14 <sup>3</sup>/<sub>4</sub> x 11  
Museum Purchase: Funds provided by  
Eduardo A. Vides and Bruce Guenther  
2014.28.1
3. **Joseph Hirsch**  
(American, 1910–1981)  
*Banquet*, 1945  
Lithograph  
image: 9 <sup>3</sup>/<sub>4</sub> x 13 <sup>3</sup>/<sub>4</sub>  
sheet: 12 x 15 <sup>7</sup>/<sub>8</sub>  
Gift of Christopher Russell  
2015.21.1
4. **Charles-Louis Houdard**  
(French, 1874–1931)  
*Grenouilles* (Frogs), from *L'Estampe  
originale*, Album VIII, 1894  
Color aquatint  
plate: 10 <sup>3</sup>/<sub>8</sub> x 15 <sup>11</sup>/<sub>16</sub>  
sheet: 14 <sup>5</sup>/<sub>8</sub> x 18 <sup>1</sup>/<sub>2</sub>  
Museum Purchase: Print Acquisition Fund  
2015.13.1
5. **Linda Hutchins**  
(American, born 1957)  
*Sieve*, 2013  
Etching  
plate: 7 <sup>3</sup>/<sub>8</sub> x 5 <sup>7</sup>/<sub>8</sub>  
sheet: 12 <sup>13</sup>/<sub>16</sub> x 11 <sup>1</sup>/<sub>16</sub>  
Sitka Center for Art and Ecology Print  
Archive: Jordan D. Schnitzer Printmaking  
Residency Collaborations  
2014.158.1
6. **Henri-Gabriel Ibels**  
(French, 1867–1936)  
Program for *Le Grappin* (The Grapnel) and  
*L'Afranchie* (The Emancipated), 1892  
Color lithograph  
image: 8 <sup>15</sup>/<sub>16</sub> x 12 <sup>3</sup>/<sub>16</sub>  
sheet: 11 <sup>3</sup>/<sub>8</sub> x 15 <sup>15</sup>/<sub>16</sub>  
Museum Purchase: Funds provided by  
Rae and Mark Mahaffey  
2014.29.1

8. **Jean-Baptiste Isabe**  
(French, 1767–1855)  
*Escalier de la Grande Tour, Château  
d'Harcourt* (Staircase of the Great Tower,  
Château d'Harcourt), 1822  
Lithograph, printed chine collé  
image: 10 <sup>1</sup>/<sub>8</sub> x 5 <sup>7</sup>/<sub>8</sub>  
sheet: 17 <sup>7</sup>/<sub>8</sub> x 11 <sup>3</sup>/<sub>4</sub>  
Gift of an anonymous donor  
2015.74.12
9. **Jean-Baptiste Isabe**  
(French, 1767–1855)  
*Racoub d'une barque à marée basse*  
(Ship Being Repaired at Low Tide), 1833  
Lithograph  
image: 12 <sup>3</sup>/<sub>8</sub> x 9 <sup>5</sup>/<sub>8</sub>  
sheet: 14 <sup>11</sup>/<sub>16</sub> x 11 <sup>1</sup>/<sub>2</sub>  
Gift of Prudence Miller  
2013.122.8
10. **Henri Gustave Jossot**  
(French, 1866–1951)  
*La Vague* (The Wave), from *L'Estampe  
originale*, Album VI, 1894  
Lithograph  
image: 20 <sup>3</sup>/<sub>4</sub> x 13 <sup>3</sup>/<sub>4</sub>  
sheet: 24 <sup>1</sup>/<sub>16</sub> x 16 <sup>7</sup>/<sub>8</sub>  
Museum Purchase: Print Acquisition Fund  
2015.14.1
11. **Auguste Lepère**  
(French, 1849–1918)  
*Paris sous la neige, vu du haut de St.  
Gervais* (Paris in the Snow, Viewed from  
the Tower of Saint-Gervais), 1890  
Wood engraving  
image: 11 <sup>7</sup>/<sub>8</sub> x 17 <sup>7</sup>/<sub>8</sub>  
sheet: 16 <sup>13</sup>/<sub>16</sub> x 21 <sup>3</sup>/<sub>4</sub>  
Museum Purchase: Funds provided by  
the Graphic Arts Council  
2014.112.1
12. **Sol LeWitt**  
(American, 1928–2007)  
*All One, Two, Three, Four, Five, & Six Part  
Combinations of Six Geometric Figures*,  
1980  
Screenprint  
image: 64 x 36 <sup>3</sup>/<sub>4</sub>  
sheet: 66 x 38 <sup>1</sup>/<sub>2</sub>



55 Grant Wood



12 Willie Cole

Museum Purchase: Funds provided by the Contemporary Art Council in honor of Bruce Guenther  
2015.15.1

13. **Dana Lynn Louis**

(American, born 1963)  
*As If*, 2013  
Etching with sugar lift, aquatint, white ground, and hard ground with debossing  
plate: 11 <sup>3</sup>/<sub>4</sub> x 7 <sup>7</sup>/<sub>8</sub>  
sheet: 18 <sup>1</sup>/<sub>16</sub> x 13 <sup>1</sup>/<sub>16</sub>  
Sitka Center for Art and Ecology Print Archive: Jordan D. Schnitzer Printmaking Residency Collaborations  
2014.158.6

14. **Nancy Macko**

(American, born 1950)  
*Namaste IV*, 2008  
Color aquatint, spit bite, and etching  
plate: 11 <sup>7</sup>/<sub>8</sub> x 11 <sup>7</sup>/<sub>8</sub>  
sheet: 24 x 22 <sup>1</sup>/<sub>2</sub>  
Gift of Mahaffey Fine Art, Print Workshop, Portland  
2009.83.24

15. **John Martin**

(English, 1789–1854)  
*Fall of Babylon*, from *Illustrations of the Bible*, 1835  
Mezzotint and etching  
plate: 7 <sup>1</sup>/<sub>2</sub> x 11 <sup>7</sup>/<sub>16</sub>  
sheet: 11 <sup>3</sup>/<sub>4</sub> x 17  
Gift of James D. Burke in honor of Malcolm Cormack  
2014.157.4

16. **Betty Merken**

(American, born 1947)  
*Couplet*, 2009  
Monotype  
image: 14 x 16 <sup>1</sup>/<sub>2</sub>  
sheet: 21 <sup>1</sup>/<sub>4</sub> x 23 <sup>15</sup>/<sub>16</sub>  
Gift of the Artist in honor of Laura Russo  
2010.30.3

17. **Charles Meryon**

(French, 1821–1868)  
*La Pompe Notre Dame* (Notre Dame Pumphouse), 1852  
Etching  
plate: 6 <sup>13</sup>/<sub>16</sub> x 10  
sheet: 9 <sup>3</sup>/<sub>4</sub> x 13 <sup>3</sup>/<sub>8</sub>  
Gift of James and Diane Burke in honor of Annette Dixon  
2012.159.1

18. **Charles Meryon**

(French, 1821–1868)  
*L'Arche du Pont Notre Dame*, Paris (The Arch of Notre Dame Bridge, Paris), 1853  
Etching  
plate: 5 <sup>15</sup>/<sub>16</sub> x 7 <sup>1</sup>/<sub>16</sub>  
sheet: 7 <sup>13</sup>/<sub>16</sub> x 9 <sup>1</sup>/<sub>16</sub>  
Museum Purchase  
2015.16.1

19. **Giovanni Battista Piranesi**

(Italian, 1720–1778)  
*The Pier with Chains*, plate XVI from *Carceri D'Invenzione* (Imaginary Prisons), 1749  
Etching and engraving  
plate: 16 <sup>1</sup>/<sub>16</sub> x 21 <sup>5</sup>/<sub>8</sub>  
sheet: 19 <sup>1</sup>/<sub>2</sub> x 25 <sup>3</sup>/<sub>16</sub>  
Gift of the Ruth Cole Kainen Estate

20. **Martin Puryear**

(American, born 1941)  
*Black Cart*, 2008  
Color aquatint and etching, printed chine collé  
plate: 23 <sup>3</sup>/<sub>4</sub> x 17 <sup>11</sup>/<sub>16</sub>  
sheet: 34 <sup>3</sup>/<sub>4</sub> x 27 <sup>5</sup>/<sub>8</sub>  
Gift of Greg Kucera and Larry Yocom in honor of Arlene Schnitzer  
2015.40.4

21. **Marcantonio Raimondi**

(Italian, ca. 1470/1482–ca. 1527/1534)  
*The Virgin with the Long Thigh* (*Holy Family with the Young Saint John the Baptist*), 1520/1525  
Engraving  
sheet (trimmed to plate mark):  
15 <sup>11</sup>/<sub>16</sub> x 10 <sup>1</sup>/<sub>2</sub>  
Museum Purchase: Elly Guerin Jackson Memorial Fund  
2008.77

22. **Paul Elie Ranson**

(French, 1862–1909)  
*Tigre dans le jungle* (Tiger in the Jungle), from *L'Estampe originale*, Album I, 1893  
Color lithograph  
image: 14 <sup>1</sup>/<sub>2</sub> x 11 <sup>3</sup>/<sub>16</sub>  
sheet: 17 <sup>5</sup>/<sub>8</sub> x 12 <sup>5</sup>/<sub>8</sub>  
Museum Purchase: Funds provided by the Jean Y. Roth Memorial Fund, the Graphic Arts Council, and Pamela Berg  
2014.156.1

23. **Rita Robillard**

(American, born 1944)  
*Space Dance*, from the series *Luminous Frontiers*, 2008/2010  
Screenprint with colored pencil  
image and sheet: 16 <sup>1</sup>/<sub>4</sub> x 22 <sup>1</sup>/<sub>4</sub>  
Gift of the Artist  
2015.79.5

24. **Pat Steir**

(American, born 1938)  
*Mixed Marks, Double Mark*, 2004  
Color water bite and sugar lift aquatint  
image: 20 x 19 <sup>7</sup>/<sub>8</sub>  
sheet: 29 x 28 <sup>1</sup>/<sub>16</sub>  
Gift of Paul Brown and Margaret Watson  
2014.27.1

25. **Storm Tharp**

(American, born 1970)  
*Health*, 2011  
Drypoint, printed chine collé  
plate: 13 <sup>11</sup>/<sub>16</sub> x 12 <sup>11</sup>/<sub>16</sub>  
sheet: 29 <sup>7</sup>/<sub>8</sub> x 22 <sup>7</sup>/<sub>16</sub>  
Museum Purchase: Funds provided by the Graphic Arts Council  
2011.134.1



48 Storm Tharp



26. **Storm Tharp**  
 (American, born 1970)  
*Spring Picture (Big Kiss)*, 2013  
 Lithograph with handapplied gold leaf  
 image: 13 <sup>3</sup>/<sub>16</sub> x 9 <sup>5</sup>/<sub>16</sub>  
 sheet: 15 <sup>1</sup>/<sub>8</sub> x 11 <sup>1</sup>/<sub>8</sub>  
 Gift of the Graphic Arts Council  
 2013.47.1

27. **James Tissot**  
 (French, 1836–1902)  
*Printemps (Spring)*, 1878  
 Etching and drypoint  
 plate: 15 <sup>15</sup>/<sub>16</sub> x 5 <sup>5</sup>/<sub>16</sub>  
 sheet: 18 <sup>11</sup>/<sub>16</sub> x 10 <sup>3</sup>/<sub>4</sub>  
 Gift in honor of Elly Guerin, President  
 of the Friends of the Gilkey Center,  
 1996–1999  
 2015.76.1

28. **Mark Tobey**  
 (American, 1890–1976)  
*Untitled*, 1957  
 Sumi-e ink on paper  
 23 x 34 <sup>3</sup>/<sub>8</sub>  
 Gift of Prudence Miller  
 2013.122.14

29. **Suzanne Valadon**  
 (French, 1865–1938)  
*Catherine accroupie (Catherine  
 Crouching)*, 1894/1895  
 Soft ground etching  
 plate: 5 <sup>1</sup>/<sub>8</sub> x 5 <sup>1</sup>/<sub>8</sub>  
 sheet: 18 <sup>3</sup>/<sub>8</sub> x 14 <sup>7</sup>/<sub>16</sub>  
 Museum Purchase: Funds provided by an  
 anonymous donor  
 2015.17.1

30. **Félix Vallotton**  
 (Swiss, 1865–1925)  
*Le Bon Marché (The Bon Marché  
 Department Store)*, 1893  
 Woodcut  
 image: 7 <sup>15</sup>/<sub>16</sub> x 10 <sup>1</sup>/<sub>4</sub>  
 sheet: 9 <sup>7</sup>/<sub>16</sub> x 13 <sup>1</sup>/<sub>16</sub>  
 Museum Purchase: Funds from the  
 Graphic Arts Council and James and  
 Diane Burke in honor of EmmaJane  
 Howard  
 2012.105.1



47 Pat Steir

31. **James Abbott McNeill Whistler**  
 (American, 1834–1903, active England  
 and France)  
*Upright Venice*, from *The Second Venice  
 Set*, 1879/1880  
 Etching and drypoint  
 sheet (trimmed to plate mark): 10 x 6 <sup>15</sup>/<sub>16</sub>  
 Museum Purchase: Funds provided by  
 Friends of the Gilkey Center and the Elly  
 Guerin Jackson Memorial Fund  
 2009.85

32. **Grant Wood**  
 (American, 1891–1942)  
*Seedtime and Harvest*, 1937  
 Lithograph  
 image: 7 <sup>3</sup>/<sub>8</sub> x 12 <sup>1</sup>/<sub>16</sub>  
 sheet: 11 <sup>9</sup>/<sub>16</sub> x 15 <sup>1</sup>/<sub>8</sub>  
 Museum Purchase: Funds provided by  
 the Graphic Arts Council  
 2014.111.1

33. **Hale Woodruff**  
 (American, 1900–1980)  
*Sunday Promenade*, from the portfolio  
*Selections from the Atlanta Period*, 1939;  
 published 1996  
 Linocut  
 image: 9 <sup>11</sup>/<sub>16</sub> x 7 <sup>3</sup>/<sub>4</sub>  
 sheet: 19 <sup>1</sup>/<sub>4</sub> x 15  
 Gift of Ivanhoe B. Higgins, Jr., and  
 Jill M. Ward  
 2013.6.1h

34. **Lisa Yuskavage**  
 (American, born 1962)  
*Kingdom*, 2006  
 Lithograph  
 image and sheet: 30 x 20  
 Gift of Greg Kucera and Larry Yocom in  
 honor of Jane Beebe  
 2015.40.9

The works in *Now on View* represent  
 just a sliver of our rich holdings;  
 a wider selection can be found at  
[www.portlandartmuseum.us](http://www.portlandartmuseum.us), the  
 Museum's online collection portal.

Cover: 45 Paul Elie Ranson



56 Hale Woodruff



PORTLAND ART MUSEUM